

مصنع الخليج للمنصات الخشبية
GULF PALLETS FACTORY





Certificate of registration

This to Certify that the
Quality Management System Of
**GULF PALLETS
FACTORY**
Doha - Qatar

Has been assessed and approved by Vision International Registrar
To the following Standard and Requirements;

ISO 9001:2008

The approved Management System is applicable to ;
Manufacture wooden pallets

Original Approval : Oct.15 2012
Current Certificate: Oct.15 2012
Certificate Expiry : Oct.14 2015
Certificate Number : 41309011

On behalf of Vision International:

The approval is subject to the organization maintaining their system in
accordance with vision International's rules and regulations for certification
This certificate is valid as long as the company name appears on our web site
www.vision-icc.org





Dear Clients and Partners,

Our Successful Journey has started back in 1999 in the state of Qatar by establishing our first workshop and store in Saniya. With the increasing demand of wooden pallets and the favorable economic conditions and progress in the Qatar economic activities; we were able to launch a new Factory in Messaieed Industrial city. Today Gulf Pallet Factory (GPF) is one of the leading and largest wooden pallet manufacturing factories in Qatar catering to various industries in the Gulf area.

Right from the start, our corporate philosophy consisted of producing top quality goods with highly trained staff and experts in pallet manufacturing technology. Integrity, teamwork, and accountability are our core values, on which we build and retain your trust.

To our existing clients and partners, thank you, for your continued support, trust and contribution to our success. To our new and potential partners; we welcome the opportunity to demonstrate to you our core competencies and quality delivery.

There is nothing that gives our team more pleasure than to know that we have exceeded your expectations. I give you my personal commitment to work with you in your business to deliver value, quality, experience, and most importantly, outstanding customer service.

CHAIRMAN MESSAGE

Thank you very much.

Sincerely,

Mohammed Al Buainain
CHAIRMAN



Since the establishment in 1999; GPF has equipped Messaieed and Sannaya factories with all kinds of resources to meet the increasing demands of wooden pallets in the gulf area. Our State-of-Art manufacturing factories with fully automated machineries allow production capacity of more than 75,000 pallets per month providing effective logistic support and distinguished warehousing facility; we have been able to serve our customers in the best ways possible. Consequently, we are recognized as one of the most prominent wooden pallets suppliers in Qatar.

Our ISO 9001:2008 certification affirms our successful pursuit of high quality and service excellence; in addition to our certification to carry out the process of **heat treating wood packaging** & meet **International Standards for Phytosanitary Measure** of ISPM-15 which prevents the spread of disease and insects that could negatively affect plants or ecosystems during transport.

Gulf Pallet Factory provides quality product range, based on exact client specifications & delivered on time in strict consonance with international standards and norms.

INTRODUCTION



Our Vision

" GPF is committed to total customer's satisfaction by assuring the best quality of the products ”.

Our Mission

To provide outstanding **VALUE** through innovative products and services.

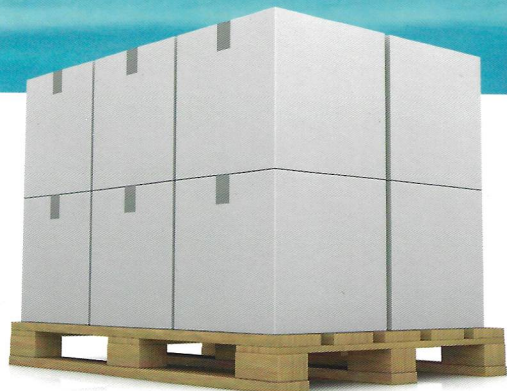
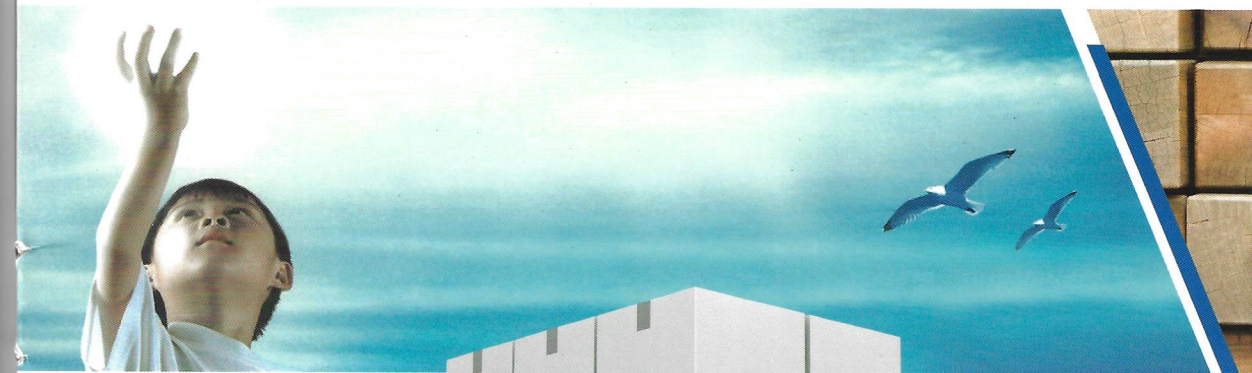
We believe that people play the leading part in our mission. We will keep on doing our best to provide exceptional added value for each client. We want to keep on investing in our employees' knowledge and technical know-how to maintain the spirit and excellence in customer service.

We are determined to continue on producing high-quality wood pallets, and improve our operational efficiencies through expansion and use of latest technology.

Our Values

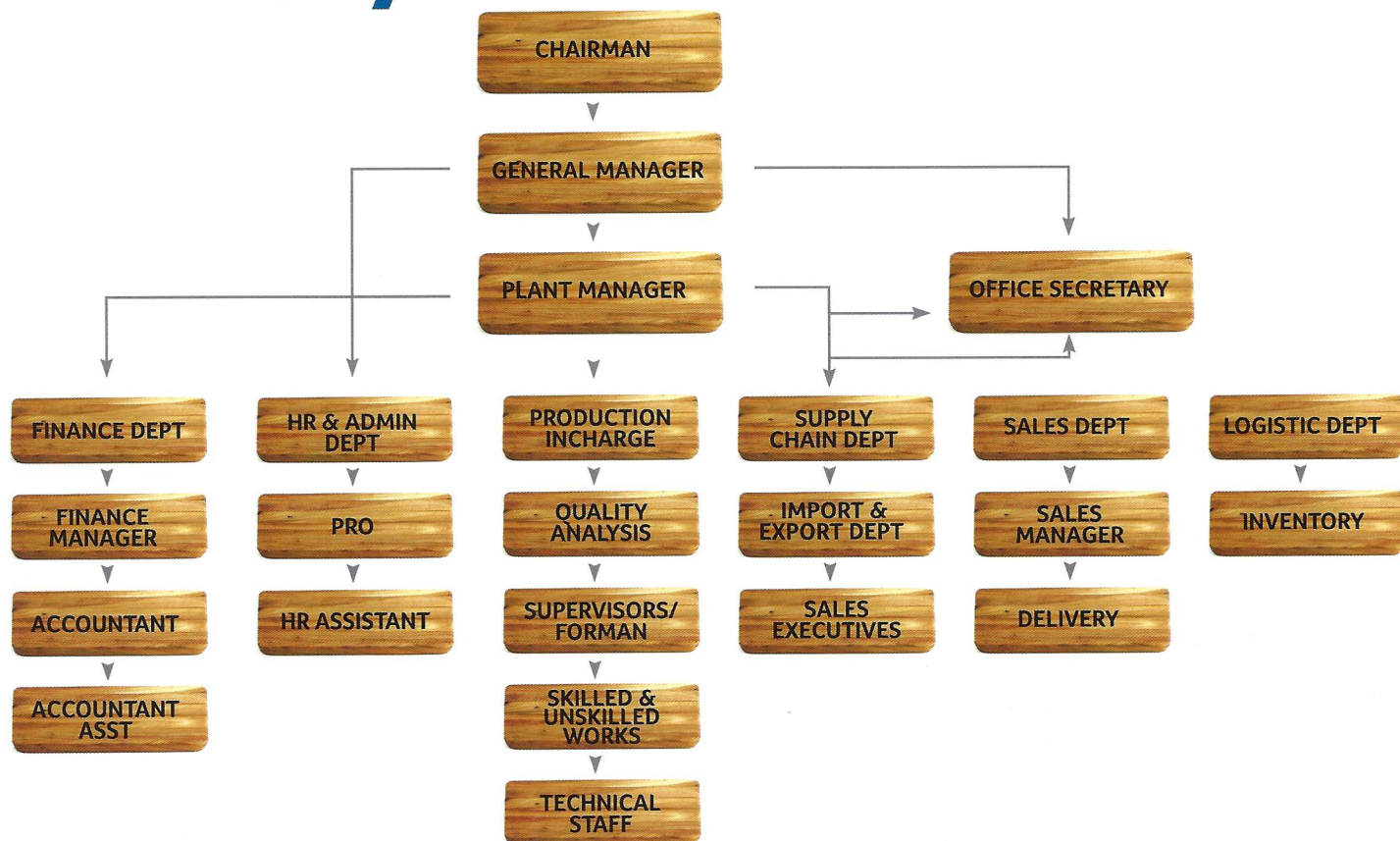
An UNCOMPROMISED COMMITMENT to...

- **SAFETY**
- Delivering A **SUPERIOR CUSTOMER EXPERIENCE**
- Demonstrating **HONESTY, INTEGRITY & RESPONSIBILITY**
- Pursuing **EXCELLENCE**





ORGANIZATION CHART



Over the years, GPF has been the top choice for leading companies in Qatar. Our quality of service has always helped us to maintain a sustaining and rewarding relationship with our esteemed local, regional & international customers from diverse industries. Some of our top clients are:



OUR MAJOR CUSTOMERS

- ★ Qatar Chemical Company Ltd (**Q-Chem**)
- ★ Qatar Petrochemical Company (**QAPCO**)
- ★ Qatar Fertiliser Company's (**QAFCO**)
- ★ Qatar International Cables Company (**QICC**)
- ★ Venturegulf Engg.
- ★ Seashore Trading
- ★ Al Shaheen Weatherford
- ★ Coca Cola
- ★ Target Engineering
- ★ Bitumode
- ★ Waterproofing Company
- ★ Dolphin Energy
- ★ Oryx Gtl
- ★ Triline
- ★ Gulf Craft
- ★ Gulf Warehousing Company
- ★ Qatari German Company
- ★ Qatar Engineering & Construction Company (**QCON**) .
- ★ Qatar Fuel Additives Company Limited (**QAFAC**)
- ★ Qatar Aluminum (**QATALUM**)
- ★ Qatar Airways

" We are proud to serve our customers".

AND MANY OTHER COMPANIES TOO.



OUR PRODUCTS



Choosing the right size and right type of pallet is important for many reasons, but most important are the considerations of maximizing your available storage space, reducing transport costs and ensuring goods are handled efficiently during all phases of the transport cycle; GPF manufactures different types of pallets based on your needs and requirements:

4 Way Entry (Notched design pallet)

The stringers between the decks are notched to admit the forklift for its entry in four ways.



CP4 Pallet:

Four way block type pallets used mainly by chemical plants.



OUR PRODUCTS



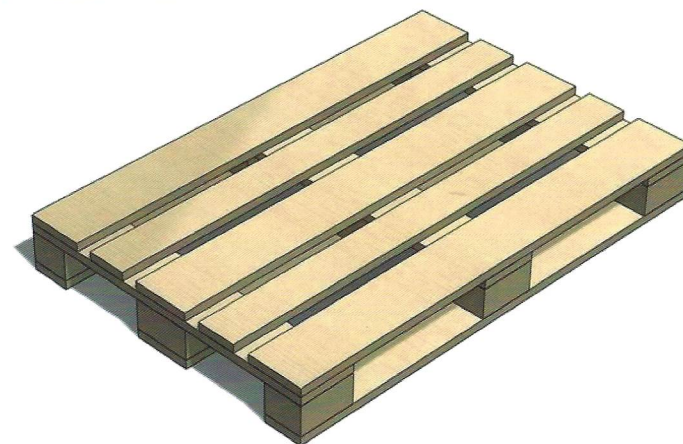
2 Way Reversible Pallet:

Permit entry of pallet jack or forklift from two sides only and in opposite directions.



Euro Pallet:

Are widely used in many industries. The standard size is 800x1200x144mm



OUR PRODUCTS



Heavy Duty Pallets:

If you need to ship liquids, metals or other products with high weight support requirements, our heavy duty wooden pallets will meet your needs. Standard or custom, they are made of hardwood and hardwood/softwood combinations. Our heavy duty wooden pallets can withstand huge loads, are long lasting, and are specifically suited for high weight shipments.





GPF Policies

EHS Policy:

GPF comprises guidelines policies on Environment, Health and Safety (EHS). We are determined to achieve our goals while ensuring adherence to international EHS standards.

GPF has established and complies with the following:

1. Prevention of Environmental and Health & Safety Accidents as a Top Priority

Create a safe and comfortable workplace by eliminating risk factors of environmental, safety and health hazard incidents that may occur during the management activities.

2. Operation of the EHS Management System

Establish and effectively operate management system to continuously maximize the impact of EHS on all management activities.

3. Compliance with Domestic and Overseas Regulations

Comply with domestic and overseas EHS regulations as well as other requirements, and set more stringent in-house standards of operation.

4. Environmental Protection and the Fulfillment of Social Responsibility

Actively take part in the environmental protection efforts of local communities and fulfill social responsibilities.

Quality Policy:

Our Quality policy is to design & manufacture value engineered high quality products, on schedule and as per agreed specifications through:

- Timely Delivery Services
- Certified High Quality products
- Exceptional customer service
- Reasonable and fair pricing





Gulf Pallets Factory
Building No. 19, Zone No. 92
Street No. 357
Messaieed Industrial City
Doha, Qatar
Tel : +974 - 44271505

Gulf Pallets Factory
Sannaya Industrial Area
Street No. 35,
Gate No. 37
Doha, Qatar
Tel : +974 - 44601400
Fax : +974 - 44601500

Email : gpf.doha@hotmail.com
www.gulfpallet.com

